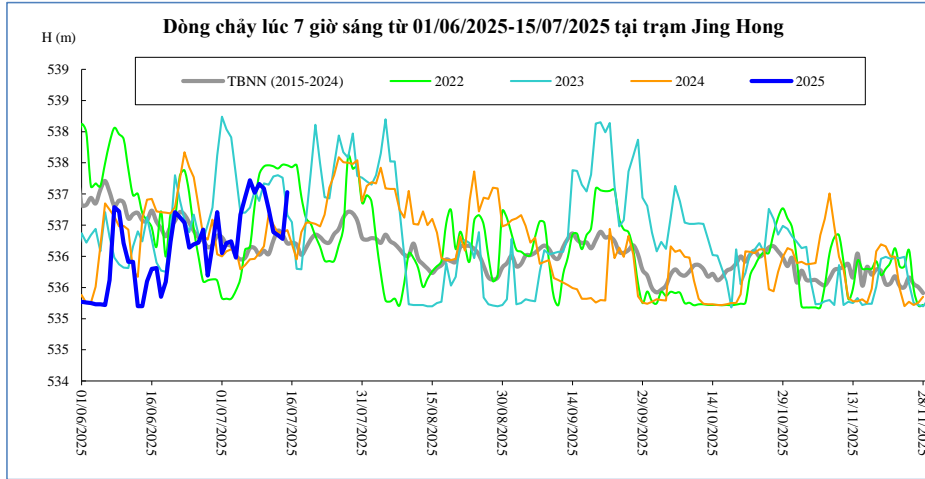


DIỄN BIẾN DÒNG CHẢY TẠI CÁC TRẠM TRÊN DÒNG CHÍNH SÔNG MÊ CÔNG
Dòng chảy lúc 7 giờ sáng từ 01/06/2025-15/07/2025

Jing Hong

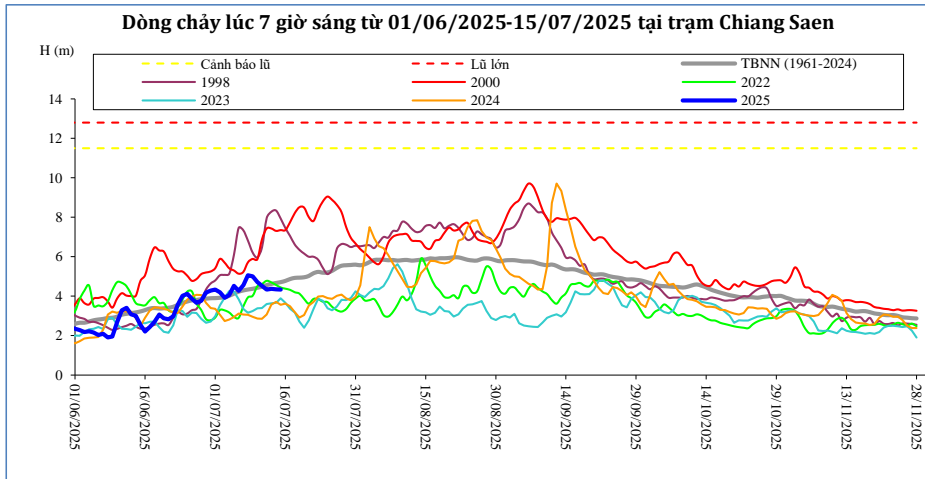
Hôm nay

15/07/2025



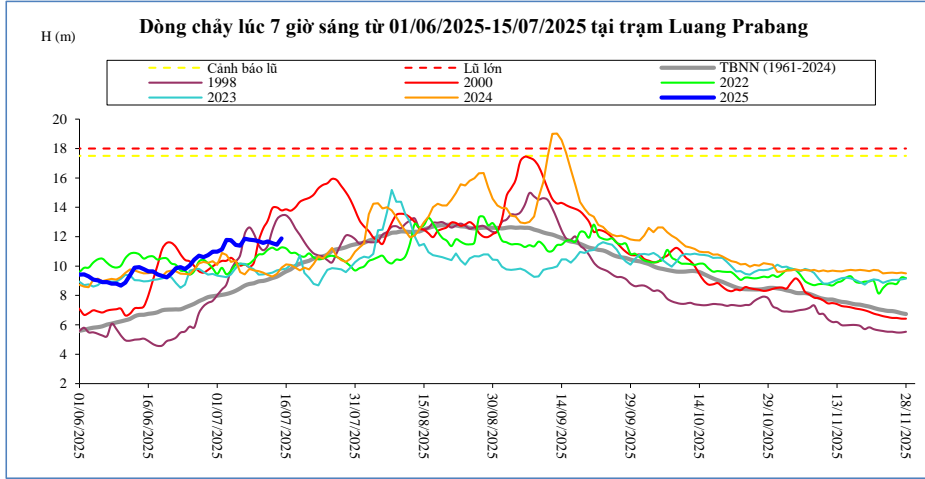
Thời gian	H(m)	W(tỷ m ³)
01/07/2025	536,05	2,62
02/07/2025	536,21	2,72
03/07/2025	536,24	2,81
04/07/2025	535,98	2,90
05/07/2025	536,67	3,02
06/07/2025	536,95	3,16
07/07/2025	537,22	3,31
08/07/2025	537,02	3,45
09/07/2025	537,16	3,60
10/07/2025	537,09	3,74
11/07/2025	536,76	3,87
12/07/2025	536,39	3,98
13/07/2025	536,34	4,08
14/07/2025	536,28	4,18
15/07/2025	537,03	4,32

Chiang Saen



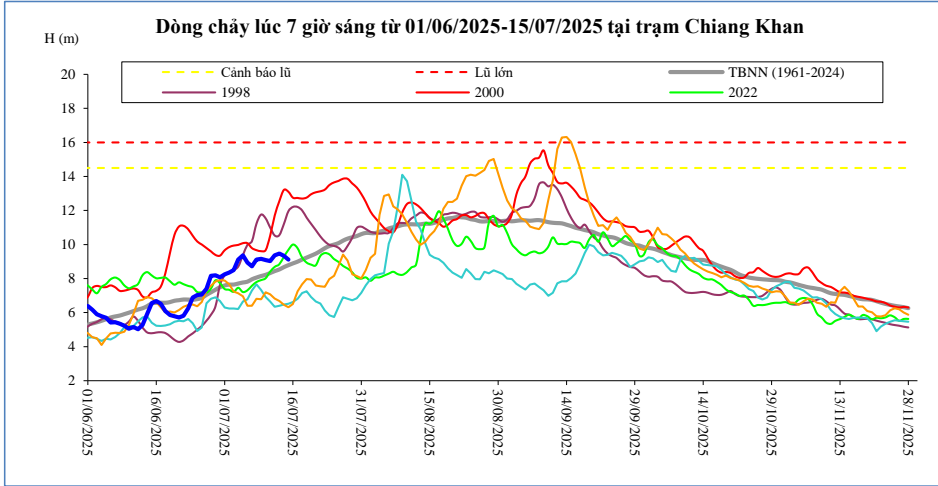
Thời gian	H(m)	W(tỷ m ³)
01/07/2025	4,34	5,03
02/07/2025	4,19	5,29
03/07/2025	3,92	5,53
04/07/2025	4,05	5,78
05/07/2025	4,53	6,08
06/07/2025	4,27	6,35
07/07/2025	4,56	6,66
08/07/2025	5,06	7,01
09/07/2025	5,00	7,37
10/07/2025	4,71	7,69
11/07/2025	4,52	7,98
12/07/2025	4,33	8,26
13/07/2025	4,37	8,55
14/07/2025	4,35	8,83
15/07/2025	4,33	9,11

Luang Prabang



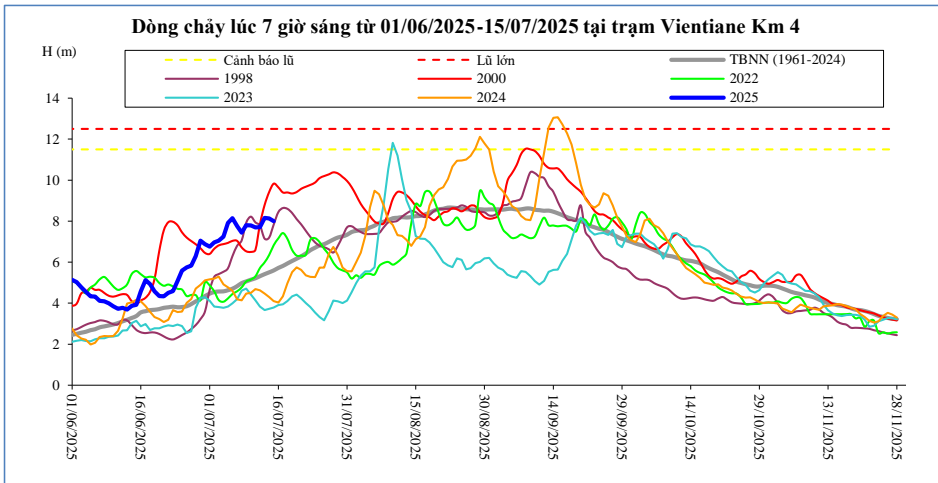
Thời gian	H(m)	W(tỷ m ³)
01/07/2025	10,98	16,66
02/07/2025	11,13	17,36
03/07/2025	11,78	18,13
04/07/2025	11,76	18,91
05/07/2025	11,44	19,65
06/07/2025	11,39	20,38
07/07/2025	11,86	21,16
08/07/2025	11,80	21,95
09/07/2025	11,76	22,72
10/07/2025	11,70	23,49
11/07/2025	11,58	24,24
12/07/2025	11,68	25,01
13/07/2025	11,56	25,76
14/07/2025	11,46	26,50
15/07/2025	11,88	27,29

Chiang Khan Vị trí sau hồ Xayabury



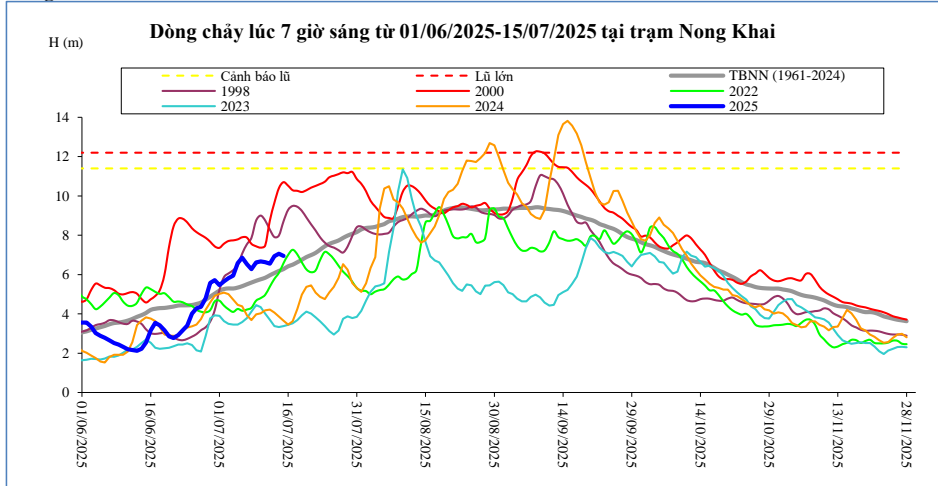
Thời gian	H(m)	W(tỷ m ³)
01/07/2025	8,25	8,31
02/07/2025	8,35	8,75
03/07/2025	8,50	9,22
04/07/2025	9,12	9,75
05/07/2025	9,36	10,32
06/07/2025	8,94	10,83
07/07/2025	8,72	11,32
08/07/2025	9,12	11,86
09/07/2025	9,16	12,40
10/07/2025	9,09	12,93
11/07/2025	9,03	13,45
12/07/2025	9,36	14,02
13/07/2025	9,47	14,59
14/07/2025	9,34	15,16
15/07/2025	9,11	15,69

Vientiane Km 4



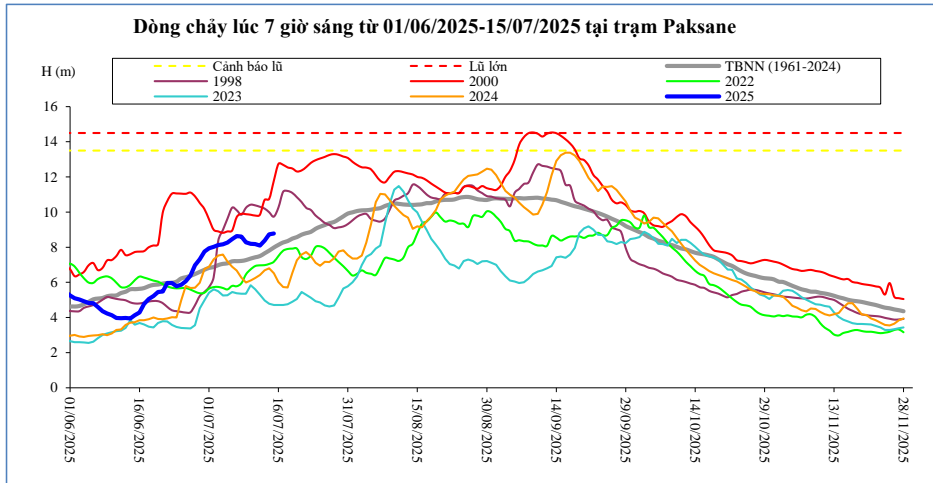
T, gian	H(m)	W(tỷ m ³)
01/07/2025	6,76	9,32
02/07/2025	6,96	9,83
03/07/2025	7,05	10,36
04/07/2025	7,24	10,96
05/07/2025	7,91	11,59
06/07/2025	8,15	12,18
07/07/2025	7,75	12,74
08/07/2025	7,44	13,36
09/07/2025	7,81	13,98
10/07/2025	7,79	14,61
11/07/2025	7,69	15,22
12/07/2025	7,71	15,87
13/07/2025	8,16	16,53
14/07/2025	8,13	17,19
15/07/2025	8,00	17,82

Nong Khai



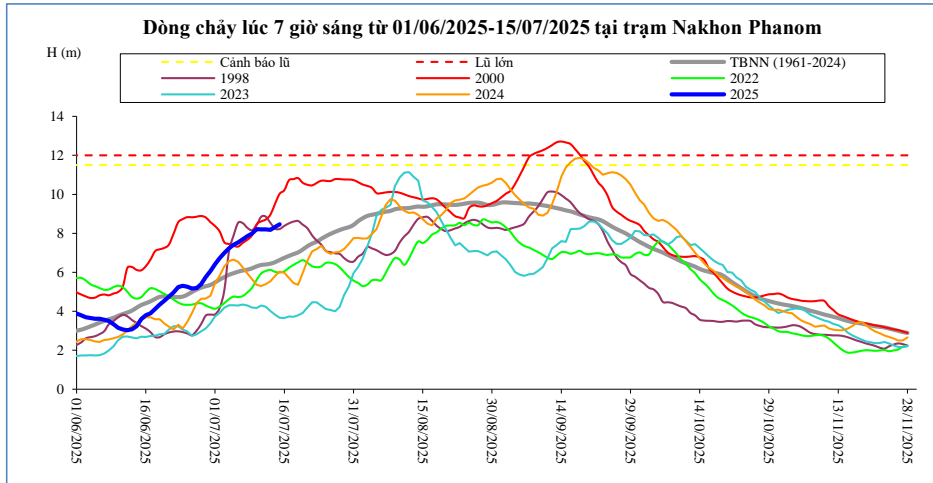
Thời gian	H(m)	W(tỷ m ³)
01/07/2025	5,46	9,76
02/07/2025	5,65	10,29
03/07/2025	5,82	10,85
04/07/2025	5,95	11,48
05/07/2025	6,58	12,14
06/07/2025	6,86	12,76
07/07/2025	6,53	13,37
08/07/2025	6,28	14,02
09/07/2025	6,62	14,67
10/07/2025	6,67	15,34
11/07/2025	6,63	15,99
12/07/2025	6,56	16,68
13/07/2025	6,93	17,38
14/07/2025	7,06	18,07
15/07/2025	6,95	18,74

Paksane



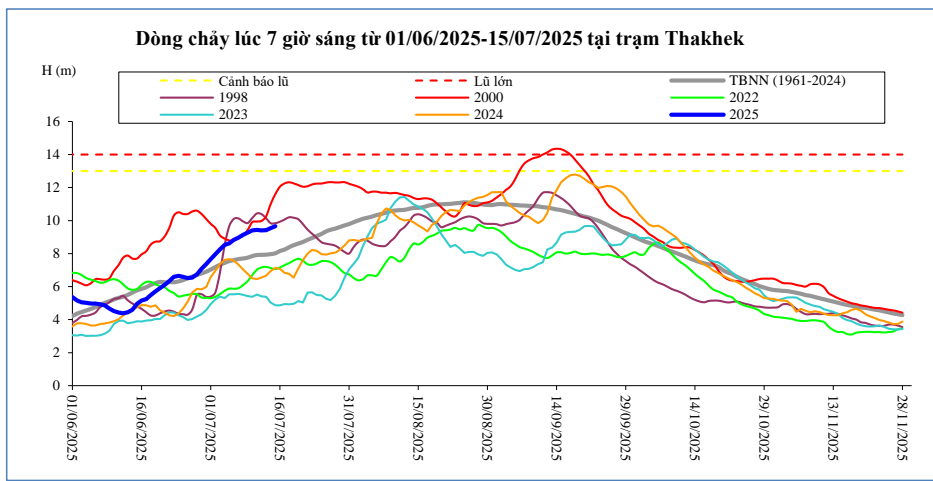
Thời gian	H(m)	W(tỷ m ³)
01/07/2025	7,94	13,53
02/07/2025	8,03	14,30
03/07/2025	8,12	15,10
04/07/2025	8,17	15,97
05/07/2025	8,26	16,88
06/07/2025	8,46	17,78
07/07/2025	8,63	18,68
08/07/2025	8,61	19,63
09/07/2025	8,28	20,60
10/07/2025	8,20	21,60
11/07/2025	8,18	22,59
12/07/2025	8,10	23,60
13/07/2025	8,38	24,62
14/07/2025	8,74	25,64
15/07/2025	8,78	26,68

Nakhon Phanom



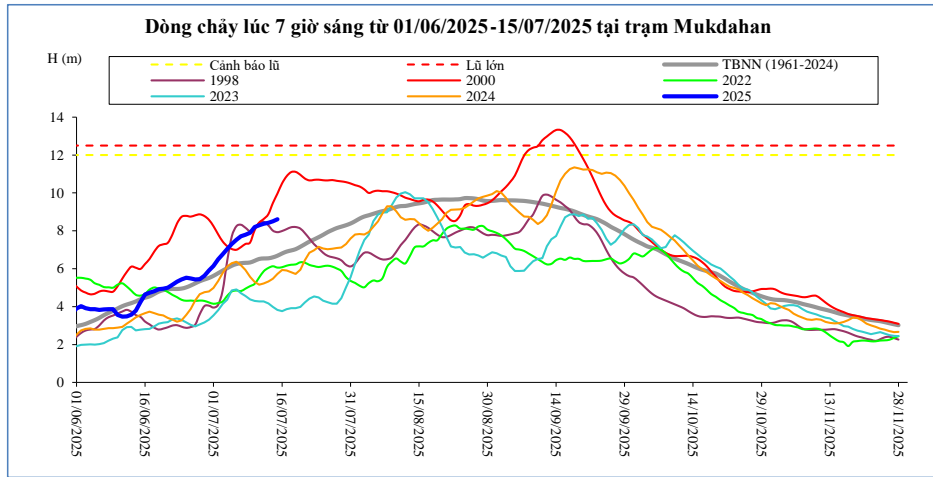
Thời gian	H(m)	W(tỷ m ³)
01/07/2025	6,41	18,00
02/07/2025	6,73	19,05
03/07/2025	6,99	20,15
04/07/2025	7,23	21,30
05/07/2025	7,41	22,50
06/07/2025	7,53	23,73
07/07/2025	7,69	24,99
08/07/2025	7,86	26,30
09/07/2025	7,98	27,63
10/07/2025	8,22	29,03
11/07/2025	8,20	30,42
12/07/2025	8,20	31,81
13/07/2025	8,18	33,20
14/07/2025	8,33	34,63
15/07/2025	8,46	36,09

Thakhek



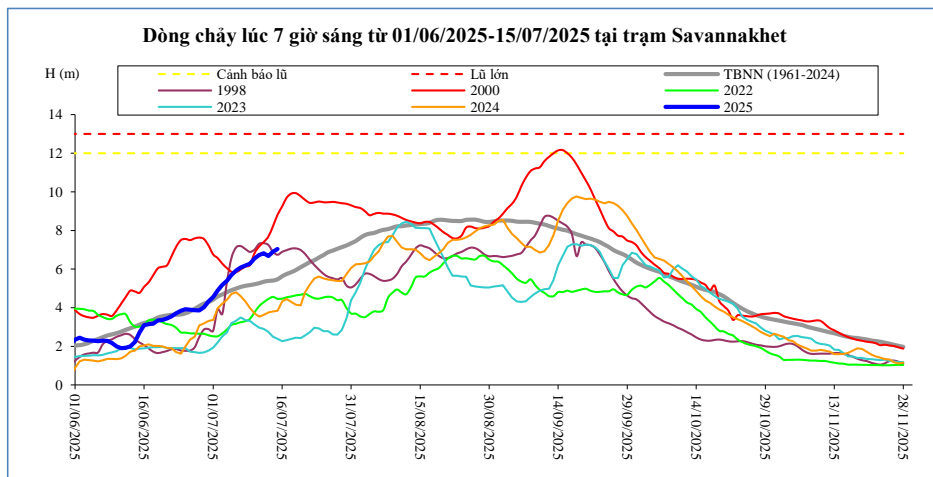
Thời gian	H(m)	W(tỷ m ³)
01/07/2025	7,67	18,07
02/07/2025	7,97	19,09
03/07/2025	8,26	20,17
04/07/2025	8,53	21,31
05/07/2025	8,62	22,47
06/07/2025	8,83	23,69
07/07/2025	8,96	24,93
08/07/2025	9,13	26,21
09/07/2025	9,27	27,53
10/07/2025	9,40	28,88
11/07/2025	9,43	30,24
12/07/2025	9,40	31,60
13/07/2025	9,42	32,95
14/07/2025	9,54	34,34
15/07/2025	9,66	35,76

Mukdahan



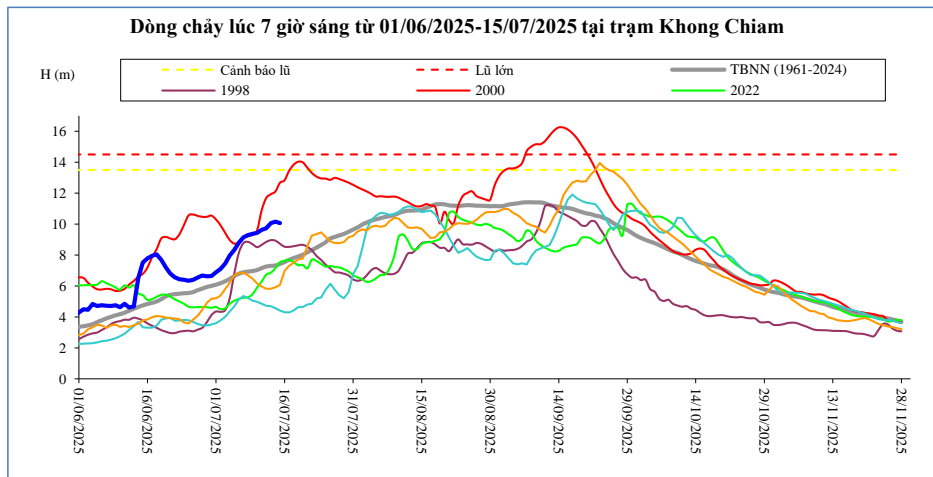
Thời gian	H(m)	W(tỷ m ³)
01/07/2025	6,15	19,02
02/07/2025	6,50	20,04
03/07/2025	6,77	21,13
04/07/2025	7,04	22,29
05/07/2025	7,31	23,48
06/07/2025	7,53	24,73
07/07/2025	7,71	26,01
08/07/2025	7,79	27,33
09/07/2025	7,90	28,69
10/07/2025	8,20	30,07
11/07/2025	8,29	31,47
12/07/2025	8,37	32,87
13/07/2025	8,42	34,27
14/07/2025	8,51	35,71
15/07/2025	8,61	37,17

Savannakhet



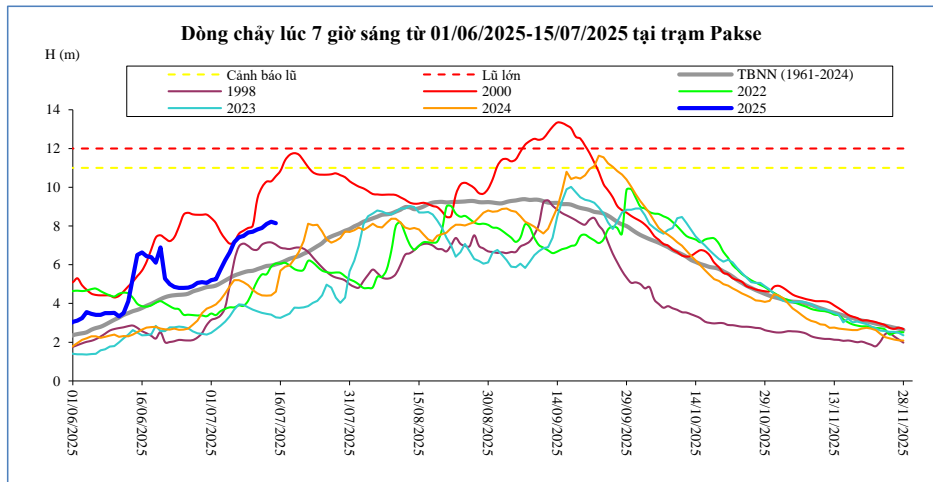
Thời gian	H(m)	W(tỷ m ³)
01/07/2025	4,55	19,08
02/07/2025	4,89	20,10
03/07/2025	5,18	21,19
04/07/2025	5,40	22,35
05/07/2025	5,69	23,54
06/07/2025	5,93	24,78
07/07/2025	6,08	26,07
08/07/2025	6,18	27,39
09/07/2025	6,27	28,75
10/07/2025	6,55	30,14
11/07/2025	6,73	31,54
12/07/2025	6,82	32,94
13/07/2025	6,68	34,35
14/07/2025	6,90	35,79
15/07/2025	7,04	37,25

Khong Cham



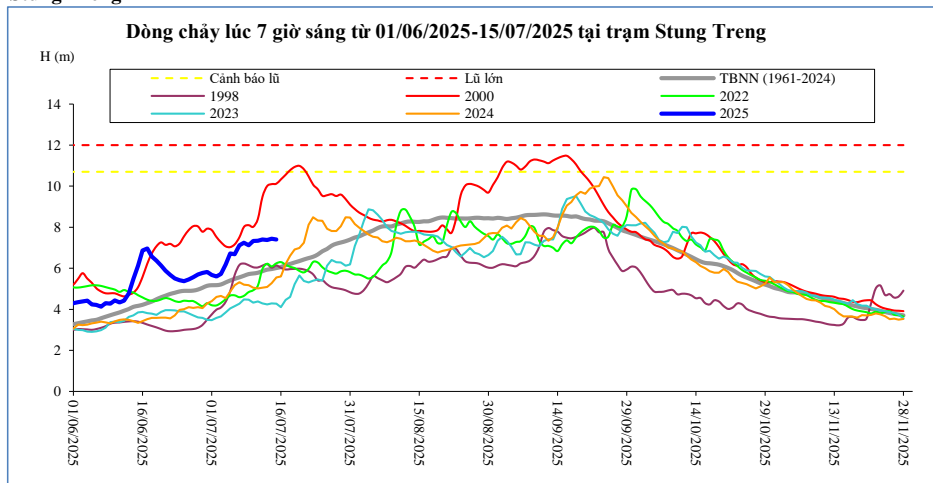
Thời gian	H(m)	W(tỷ m ³)
01/07/2025	6,89	27,30
02/07/2025	7,10	28,40
03/07/2025	7,45	29,58
04/07/2025	7,96	30,89
05/07/2025	8,32	32,28
06/07/2025	8,80	33,79
07/07/2025	9,15	35,38
08/07/2025	9,29	37,02
09/07/2025	9,37	38,67
10/07/2025	9,44	40,34
11/07/2025	9,63	42,07
12/07/2025	9,73	43,82
13/07/2025	10,06	45,65
14/07/2025	10,16	47,52
15/07/2025	10,07	49,36

Pakse



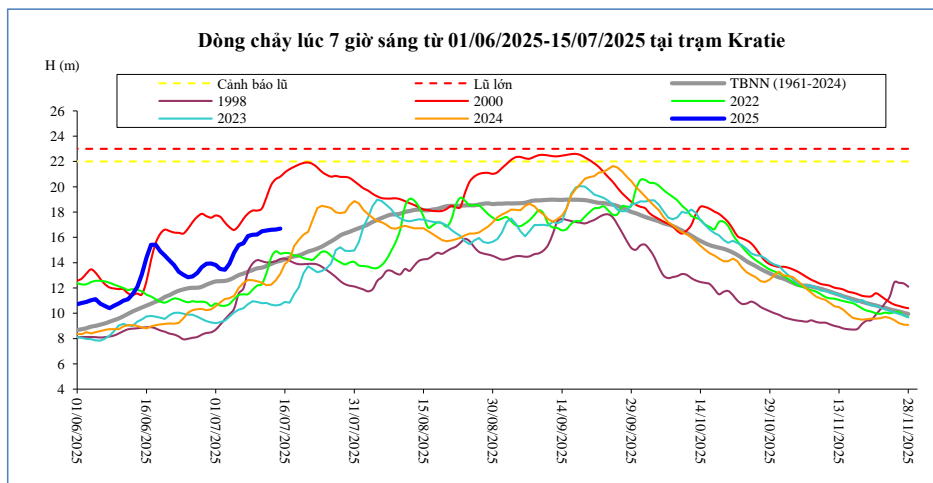
Thời gian	H(m)	W(tỷ m ³)
01/07/2025	5,20	28,58
02/07/2025	5,25	29,64
03/07/2025	5,74	30,82
04/07/2025	6,24	32,15
05/07/2025	6,64	33,58
06/07/2025	7,16	35,17
07/07/2025	7,42	36,84
08/07/2025	7,48	38,53
09/07/2025	7,66	40,27
10/07/2025	7,70	42,03
11/07/2025	7,82	43,83
12/07/2025	7,90	45,65
13/07/2025	8,10	47,53
14/07/2025	8,22	49,45
15/07/2025	8,14	51,35

Stung Treng



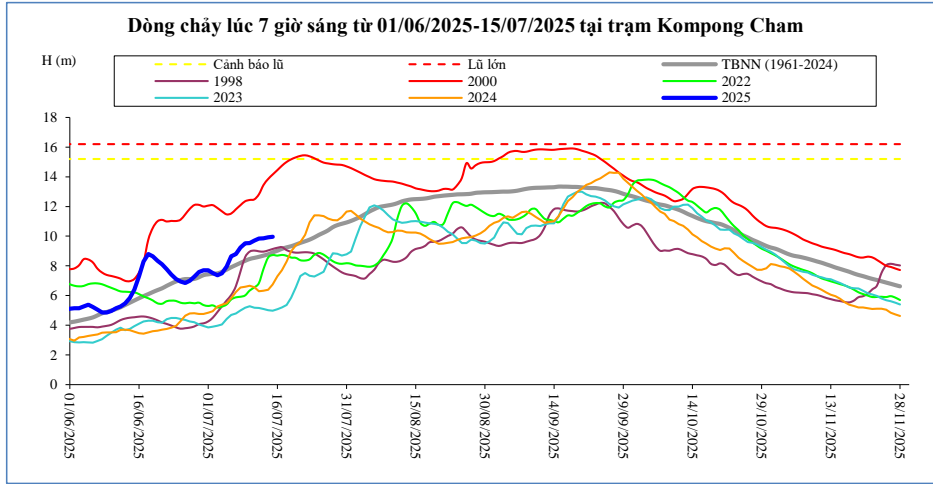
Thời gian	H(m)	W(tỷ m ³)
01/07/2025	5,67	36,18
02/07/2025	5,60	37,53
03/07/2025	5,72	38,88
04/07/2025	6,19	40,35
05/07/2025	6,72	42,03
06/07/2025	6,68	43,85
07/07/2025	7,12	45,73
08/07/2025	7,24	47,74
09/07/2025	7,12	49,78
10/07/2025	7,33	51,83
11/07/2025	7,34	53,95
12/07/2025	7,40	56,08
13/07/2025	7,38	58,24
14/07/2025	7,44	60,41
15/07/2025	7,40	62,60

Kratie



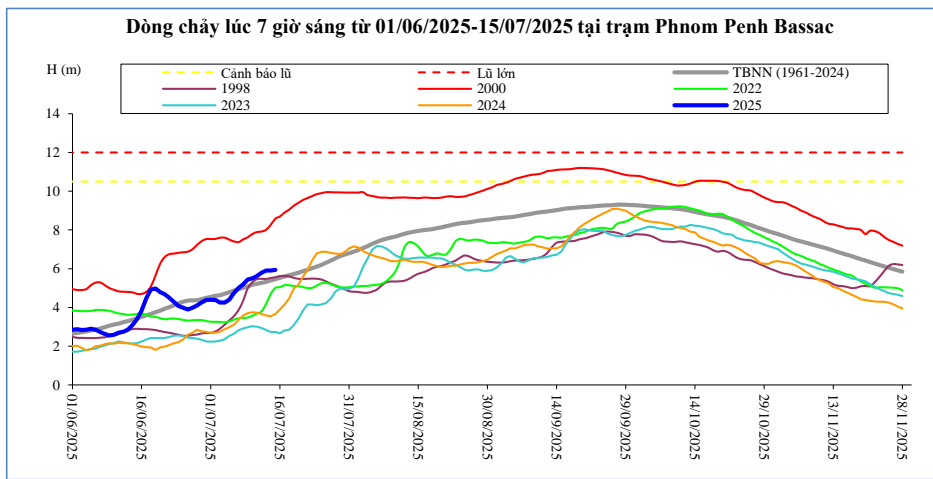
Thời gian	H(m)	W(tỷ m ³)
01/07/2025	13,81	37,18
02/07/2025	13,49	38,57
03/07/2025	13,44	39,94
04/07/2025	13,91	41,43
05/07/2025	14,80	43,14
06/07/2025	15,39	44,99
07/07/2025	15,54	46,89
08/07/2025	16,11	48,95
09/07/2025	16,20	51,03
10/07/2025	16,22	53,12
11/07/2025	16,49	55,28
12/07/2025	16,53	57,45
13/07/2025	16,60	59,65
14/07/2025	16,62	61,85
15/07/2025	16,69	64,07

Kompong Cham



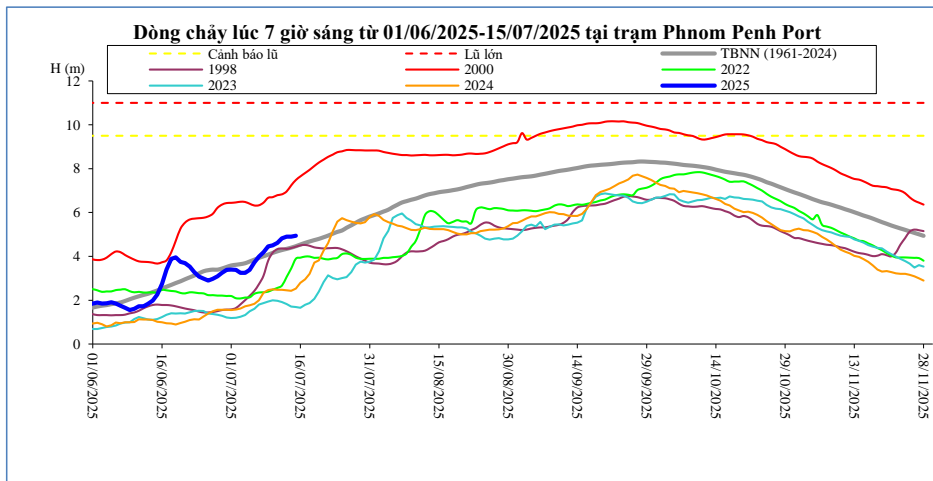
Thời gian	H(m)	Hbq(m)
01/07/2025	7,70	7,43
02/07/2025	7,52	7,47
03/07/2025	7,37	7,49
04/07/2025	7,51	7,60
05/07/2025	7,96	7,75
06/07/2025	8,64	7,91
07/07/2025	8,80	8,06
08/07/2025	9,24	8,20
09/07/2025	9,52	8,34
10/07/2025	9,54	8,47
11/07/2025	9,70	8,54
12/07/2025	9,84	8,61
13/07/2025	9,86	8,69
14/07/2025	9,92	8,78
15/07/2025	9,96	8,91

Phnom Penh Bassac



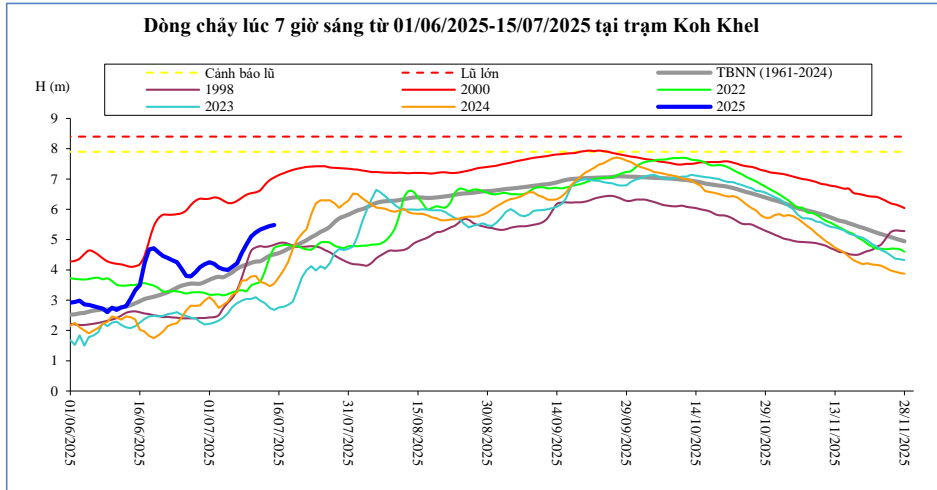
Thời gian	H(m)	Hbq(m)
01/07/2025	4,40	4,55
02/07/2025	4,38	4,60
03/07/2025	4,25	4,63
04/07/2025	4,25	4,71
05/07/2025	4,40	4,78
06/07/2025	4,74	4,87
07/07/2025	5,00	4,94
08/07/2025	5,20	5,01
09/07/2025	5,44	5,08
10/07/2025	5,50	5,16
11/07/2025	5,62	5,22
12/07/2025	5,79	5,27
13/07/2025	5,91	5,32
14/07/2025	5,91	5,39
15/07/2025	5,94	5,46

Phnom Penh Port



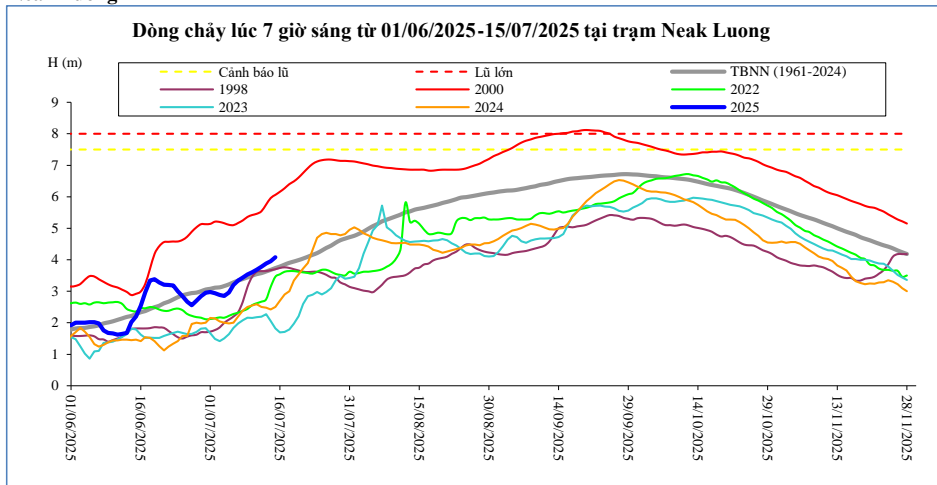
Thời gian	H(m)	Hbq(m)
01/07/2025	3,40	3,58
02/07/2025	3,39	3,61
03/07/2025	3,25	3,64
04/07/2025	3,25	3,69
05/07/2025	3,39	3,77
06/07/2025	3,73	3,85
07/07/2025	3,99	3,93
08/07/2025	4,19	4,00
09/07/2025	4,46	4,08
10/07/2025	4,50	4,16
11/07/2025	4,61	4,23
12/07/2025	4,82	4,29
13/07/2025	4,90	4,34
14/07/2025	4,90	4,40
15/07/2025	4,94	4,46

Koh Khel



Thời gian	H(m)	Hbq(m)
01/07/2025	4,25	3,67
02/07/2025	4,20	3,73
03/07/2025	4,08	3,77
04/07/2025	4,02	3,76
05/07/2025	4,00	3,84
06/07/2025	4,10	3,92
07/07/2025	4,22	4,04
08/07/2025	4,55	4,12
09/07/2025	4,84	4,17
10/07/2025	5,10	4,23
11/07/2025	5,23	4,27
12/07/2025	5,33	4,29
13/07/2025	5,39	4,38
14/07/2025	5,45	4,47
15/07/2025	5,48	4,51

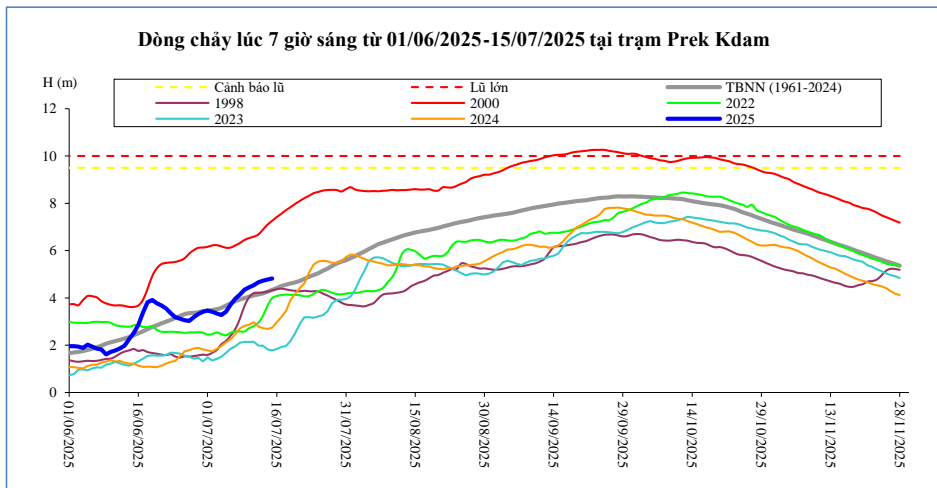
Neak Luong



Thời gian	H(m)	Hbq(m)
01/07/2025	2,98	3,08
02/07/2025	2,94	3,11
03/07/2025	2,88	3,12
04/07/2025	2,85	3,17
05/07/2025	2,96	3,22
06/07/2025	3,20	3,28
07/07/2025	3,34	3,34
08/07/2025	3,44	3,39
09/07/2025	3,53	3,44
10/07/2025	3,60	3,49
11/07/2025	3,68	3,54
12/07/2025	3,78	3,58
13/07/2025	3,88	3,63
14/07/2025	3,95	3,68
15/07/2025	4,08	3,74

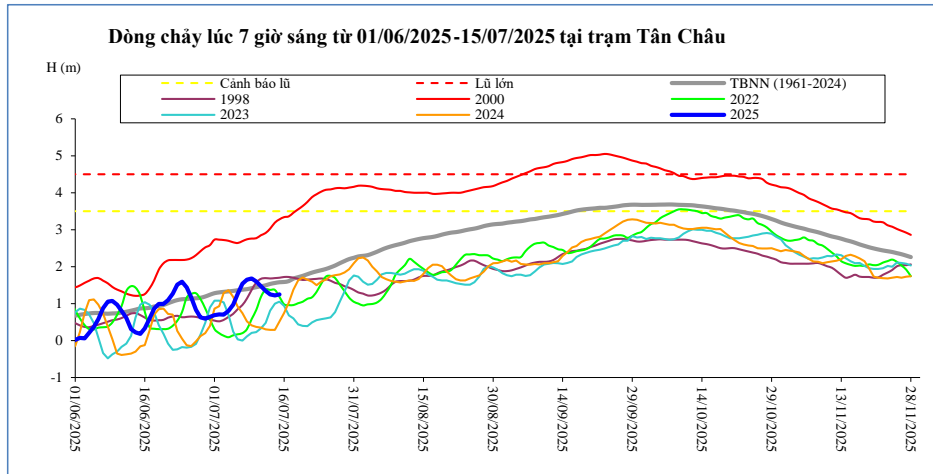
Prek Kdam

Sông Mê Công chảy vào Biển Hồ,



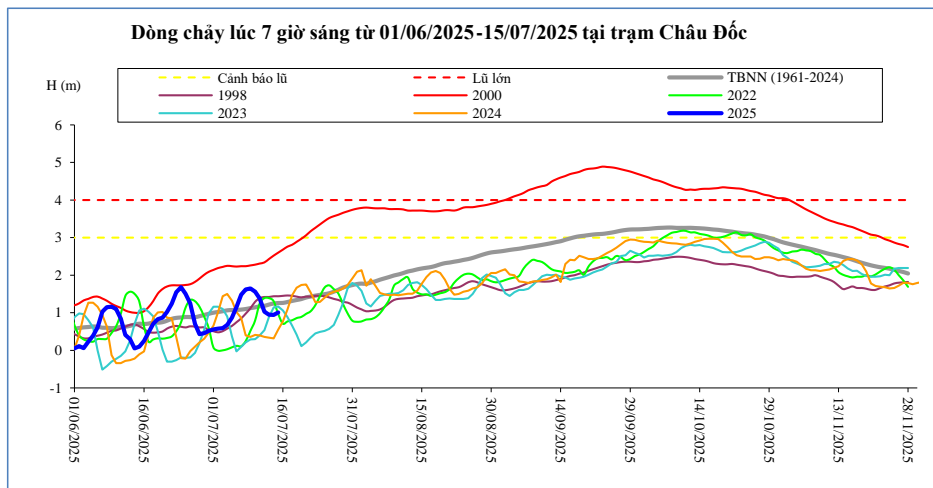
Thời gian	H(m)	W (tỷ m ³)	Biển Hồ
01/07/2025	3,47	5,70	
02/07/2025	3,42	5,86	
03/07/2025	3,34	6,48	
04/07/2025	3,28	7,35	
05/07/2025	3,42	7,45	
06/07/2025	3,72	7,03	
07/07/2025	3,96	7,30	
08/07/2025	4,14	7,66	
09/07/2025	4,34	8,35	
10/07/2025	4,45	8,61	
11/07/2025	4,54	9,13	
12/07/2025	4,66	9,50	
13/07/2025	4,72	9,97	
14/07/2025	4,78	10,39	
15/07/2025	4,82	10,81	

Tân Châu



Thời gian	H(m)	Hbq(m)
01/07/2025	0,69	1,28
02/07/2025	0,71	1,30
03/07/2025	0,70	1,32
04/07/2025	0,80	1,33
05/07/2025	0,97	1,34
06/07/2025	1,26	1,36
07/07/2025	1,54	1,38
08/07/2025	1,65	1,39
09/07/2025	1,68	1,42
10/07/2025	1,60	1,44
11/07/2025	1,47	1,47
12/07/2025	1,34	1,49
13/07/2025	1,25	1,53
14/07/2025	1,22	1,56
15/07/2025	1,25	1,58

Châu Đốc



Thời gian	H(m)	Hbq(m)
01/07/2025	0,56	1,00
02/07/2025	0,58	1,02
03/07/2025	0,59	1,04
04/07/2025	0,68	1,06
05/07/2025	0,87	1,07
06/07/2025	1,15	1,07
07/07/2025	1,48	1,08
08/07/2025	1,62	1,10
09/07/2025	1,65	1,12
10/07/2025	1,56	1,14
11/07/2025	1,38	1,17
12/07/2025	1,03	1,18
13/07/2025	0,95	1,22
14/07/2025	0,94	1,25
15/07/2025	1,01	1,26

Ghi chú:

-: Không có số liệu

H(m): Mức nước lúc 7 giờ sáng lấy theo số liệu thực đo của MRC, W (tỷ m3): Ước tính của Viện Quy hoạch Thủy lợi Miền Nam,

W là tổng lượng nước kể từ ngày 1 tháng 6, Riêng Biển Hồ là dung tích hiện tại, Hbq (m): Mức nước trung bình nhiều năm,

BẢN ĐỒ VỊ TRÍ CÁC TRẠM DỌC DÒNG CHÍNH MÊ CÔNG

